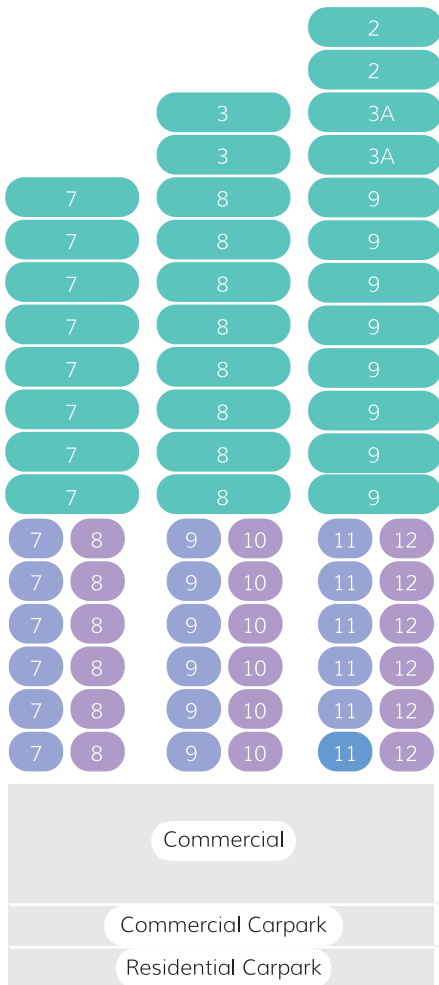


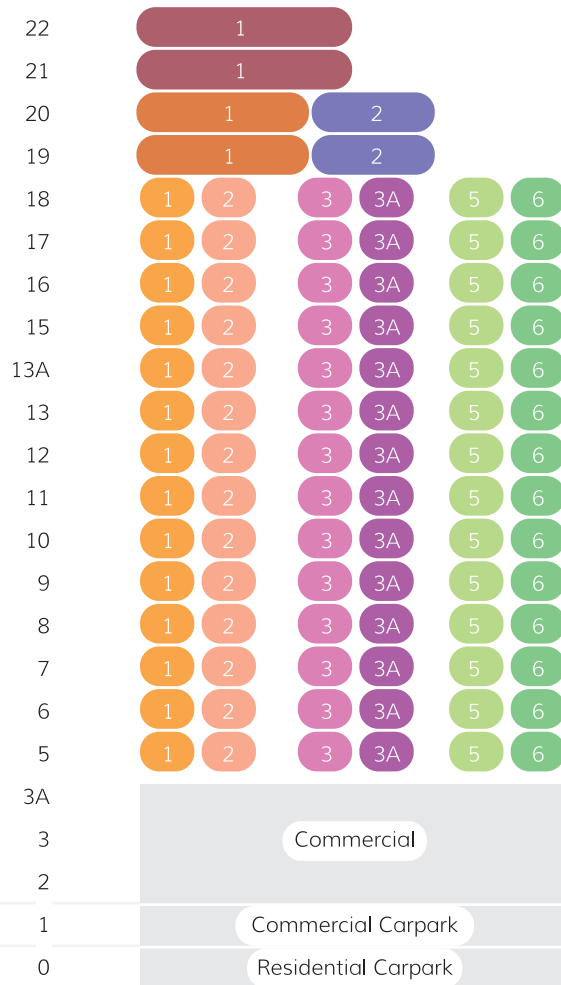
# RIVERINE DIAMOND

Kuching Riverine  
Resort

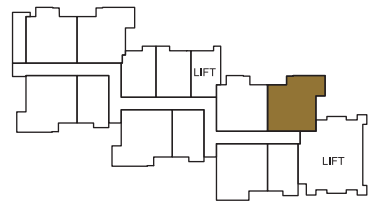
## South - City View



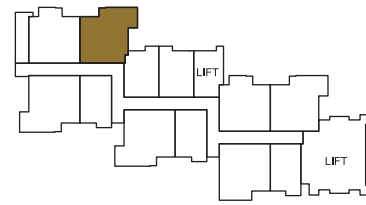
## North - River View



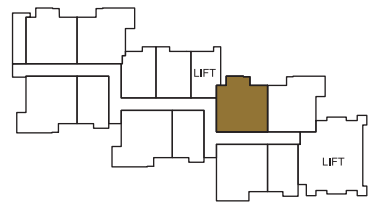
<span style="color: teal;">■</span>	A3a	132s.m.	Triple Key
<span style="color: darkred;">■</span>	A3b	180s.m.	3 Bedrooms
<span style="color: orange;">■</span>	A2g	162s.m.	2 Bedrooms
<span style="color: darkblue;">■</span>	A2h	103s.m.	2 Bedrooms
<span style="color: lightorange;">■</span>	A2a	83s.m.	Dual Key
<span style="color: lightred;">■</span>	A2b	76s.m.	Dual Key
<span style="color: lightgreen;">■</span>	A2c	82s.m.	Dual Key
<span style="color: green;">■</span>	A2d	76s.m.	Dual Key
<span style="color: blue;">■</span>	A2e	81s.m.	Dual Key
<span style="color: purple;">■</span>	A2f	86s.m.	Dual Key
<span style="color: pink;">■</span>	ASa	50s.m.	Studio
<span style="color: darkpurple;">■</span>	ASb	50s.m.	Studio
<span style="color: lightpurple;">■</span>	ASc	45s.m.	Studio



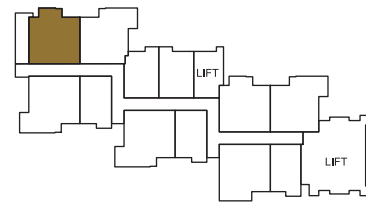
**A2a** | 83s.m.  
Level 5-18



**A2c** | 82s.m.  
Level 5-18

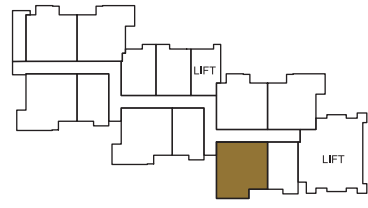


**A2b** | 76s.m.  
Level 5-18



**A2d** | 76s.m.  
Level 5-18

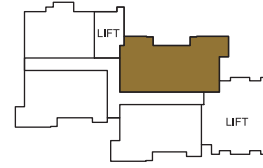




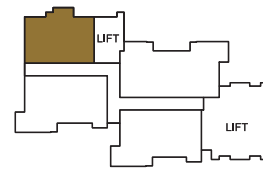
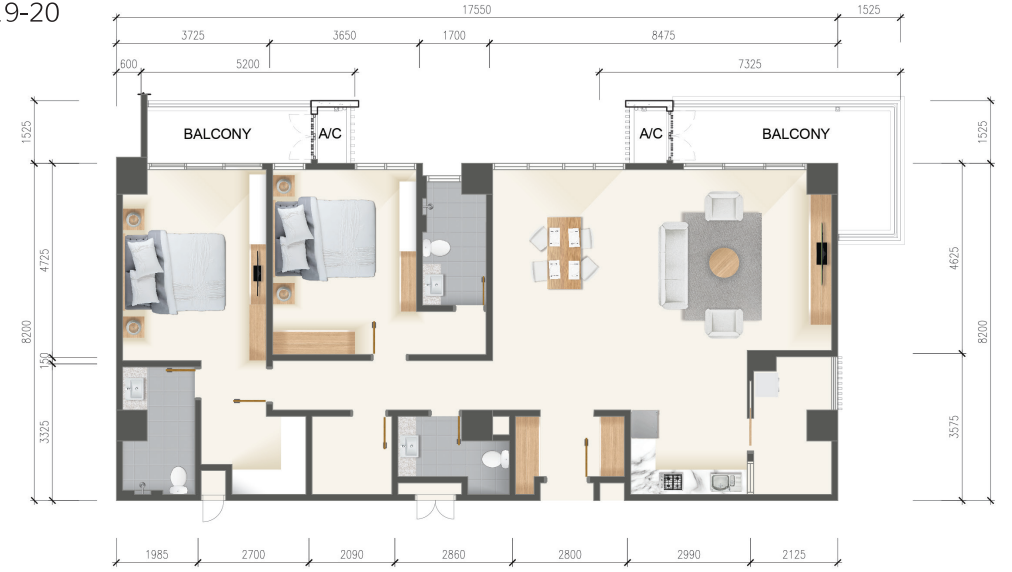
**A2e** | 81s.m.  
Level 5



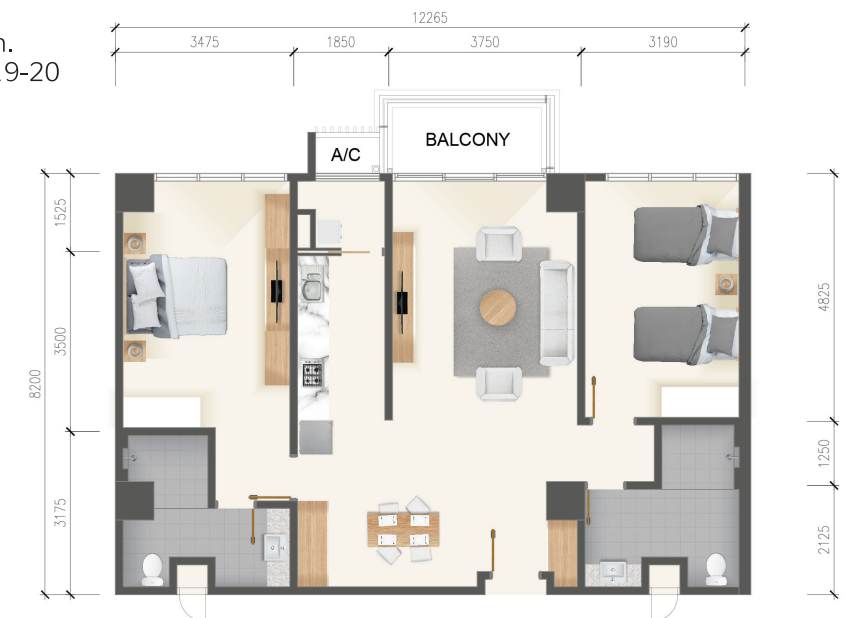
**A2f** | 86s.m.  
Level 5-10

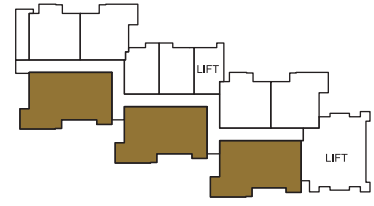


**A2g** | 162s.m.  
Level 19-20

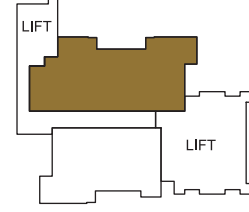


**A2h** | 103s.m.  
Level 19-20

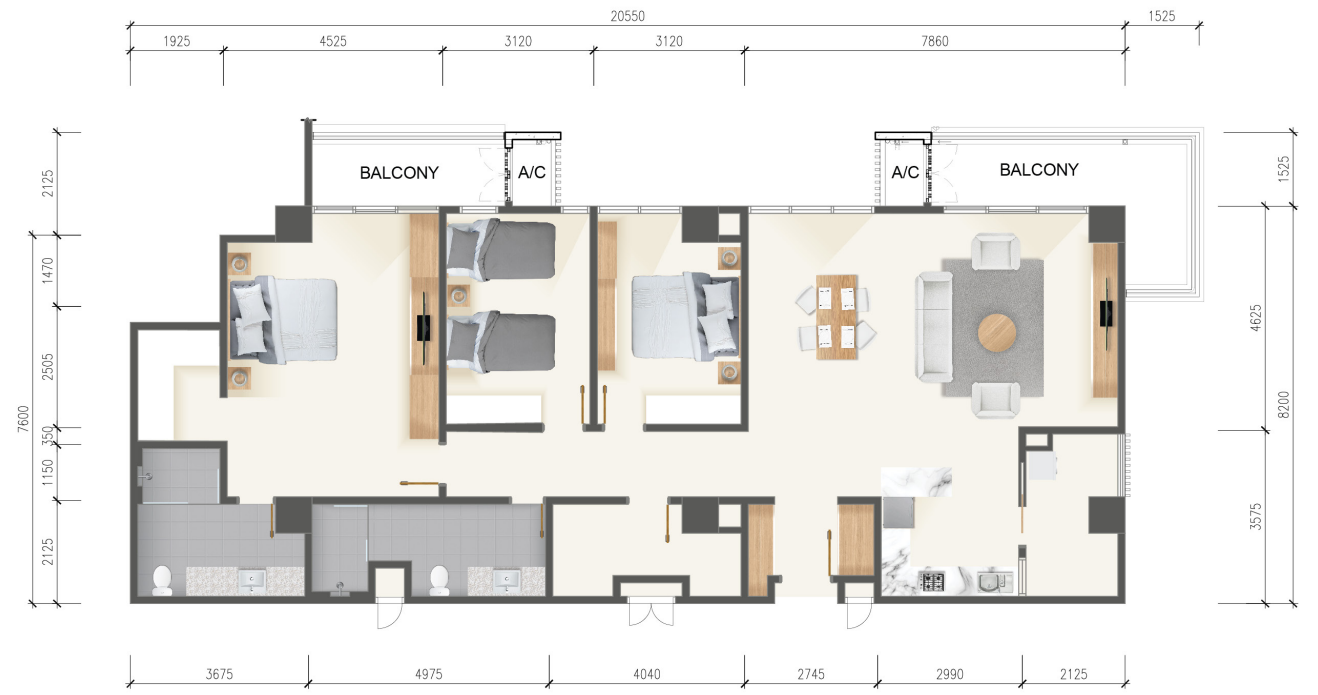




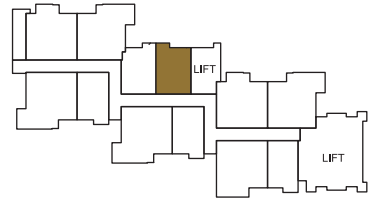
**A3a** | 132s.m.  
Level 11-22



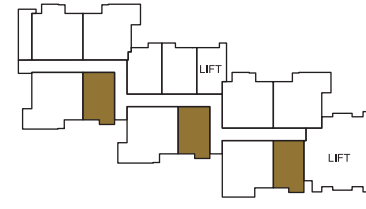
**A3b** | 180s.m.  
Level 21-22



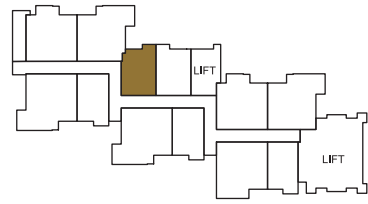
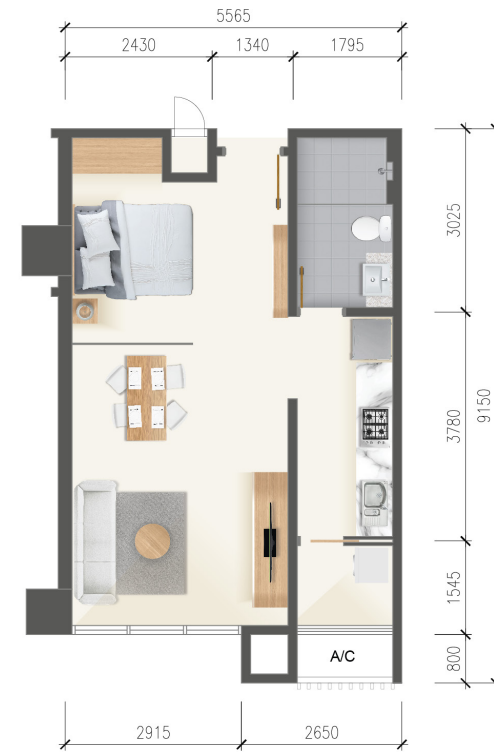




**ASa** | 50s.m.  
Level 5-18



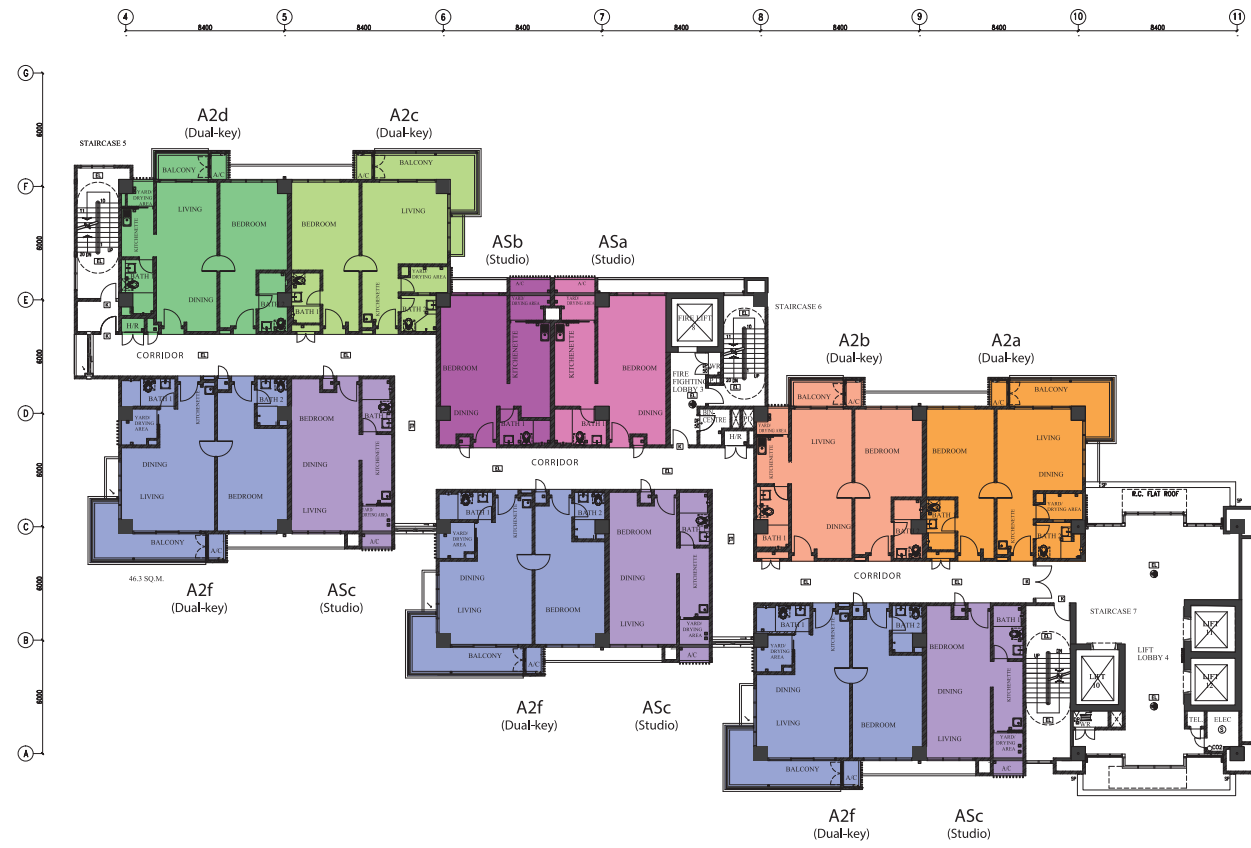
**ASc** | 45s.m.  
Level 5-10



**ASb** | 50s.m.  
Level 5-18



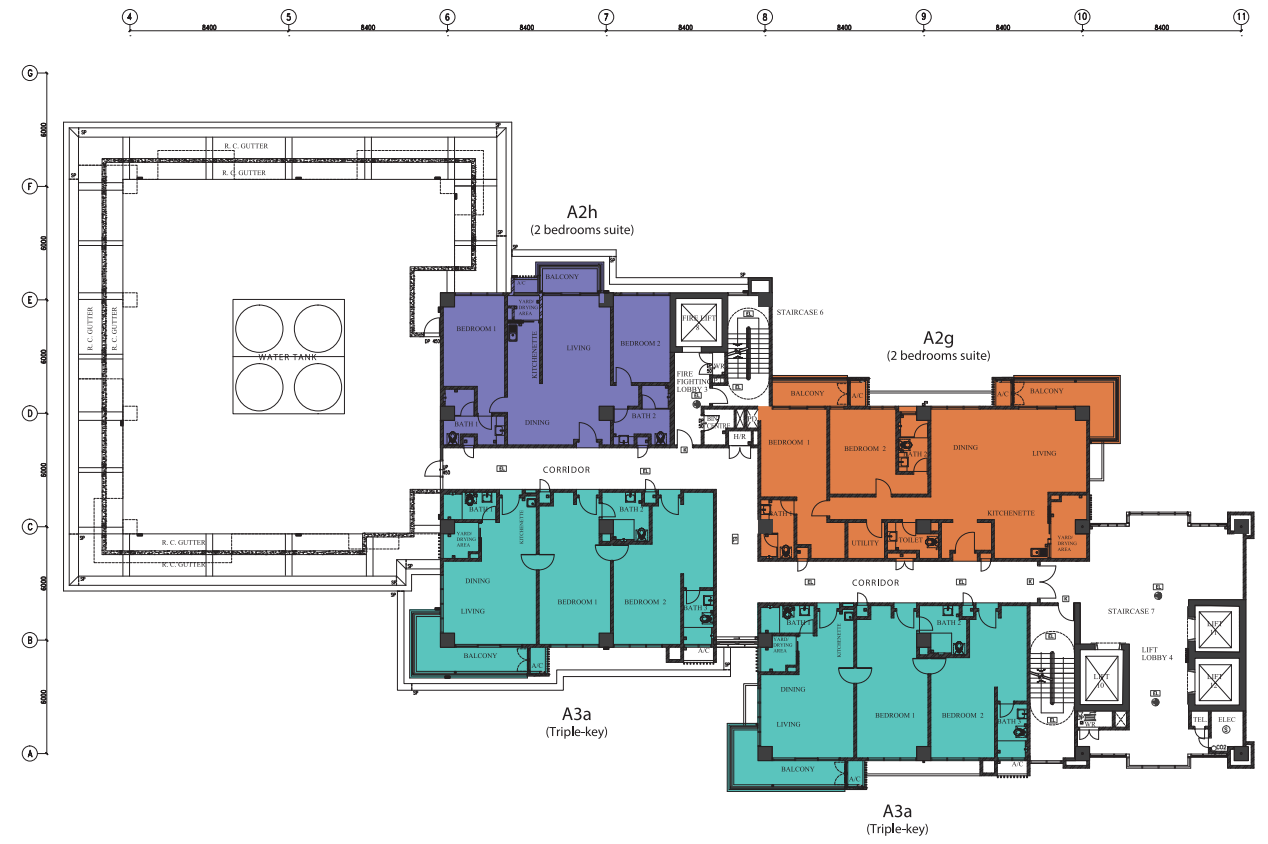
### Level 6-10



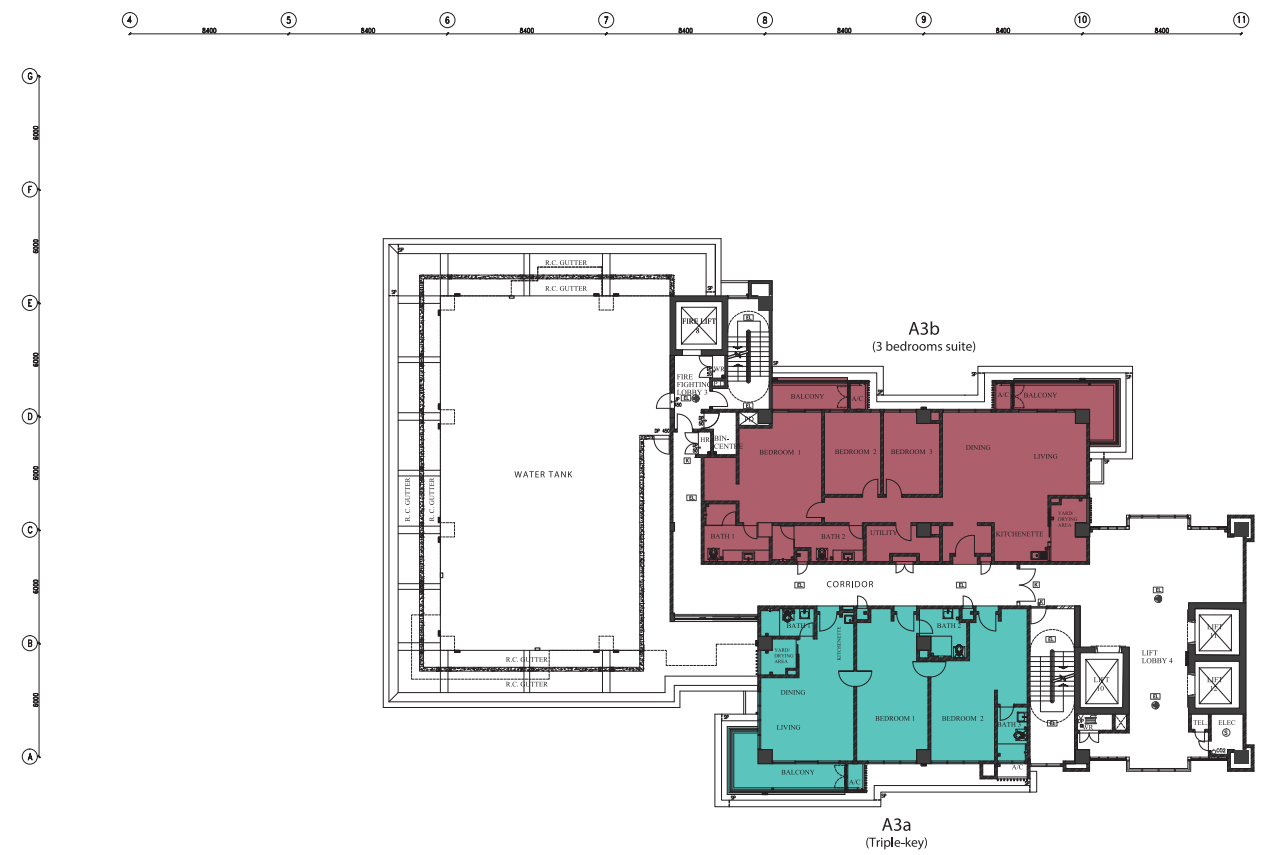
### Level 11-18



### Level 19-20



### Level 21-22



## specifications

STRUCTURE	Reinforced concrete
WALL	Masonry Reinforced concrete
CEILING	Plasterboard ceiling / Vista board & paint
WINDOWS	uPVC frame glass window
DOORS	Fire-rated door / Flush door / uPVC sliding frame door
IRONMONGERY	Quality lockset
WALL FINISHES	Tiles Cement render & paint
FLOOR FINISHES	Tiles Laminated flooring to selected units (Type A2g, A2h, A3b bedrooms)
SANITARY & PLUMBING	Wash basin with tap Water closet Shower head Bib tap
KITCHEN	Stainless steel sink to all units (Except Type A2g, A2h, A3b)
MECHANICAL & ELECTRICAL	Power point SMATV point Fibre wall socket Aircond point(s) to all units (Except Type A2g, A2h, A3b) Instant water heater point(s) to all units (Except Type A2g, A2h, A3b)